

CATALOG HOUSES 2022

A photograph of a modern mobile home situated in a lush forest. The home has a dark grey or black exterior with vertical wooden slats in a light brown or yellowish hue. It features a gabled roof and a large glass door leading to a deck. On the deck, there are two wicker chairs, a small table, and some potted plants. The surrounding area is filled with tall pine trees and green grass.

**POLISH MANUFACTURER
OF MOBILE HOMES
AND MODULAR**

JPJ MOBILE HOUSE

We are a Polish company that produces mobile and modular houses. Our projects are based on standards and concepts brought from Scandinavian countries.

The company was established on the basis of the experience of the company's President - Jacek Piasecki, who for nearly 25 years cooperated with leading producers of mobile and modular houses from Denmark, Sweden and Norway. Currently, the catalog includes 6 fixed models of mobile and modular houses, as well as individual productions.

The technology of open diffusion used by us, together with tight and solid insulation and adequate ventilation of the whole house, guarantees our clients an energy-saving and solid house for many years.



In addition to mobile and modular homes, our offer also includes sanitary modules, saunas and utility modules. We permanently cooperate with architects and designers who co-create all the designs of our structures.

We also offer full personalization of the order and production of the house according to the client's design. It's your home and you decide everything!





MODULAR HOMES

Modular construction allows you to quickly build a safe and cozy home ready to move in. It is a cheap and economical method of construction, allowing for earlier preparation of elements in the production hall and final assembly on your plot.

There are practically no restrictions in modular construction. Modules can be freely combined both horizontally and mounted on top of each other, creating virtually unlimited surfaces and floors of the house.

It is possible to order a modular house in a shell, as well as fully furnished and ready to move in.

The finished house is equipped with the necessary installations - sewage, rainwater drainage, electricity, ventilation. It is fully furnished and has RTV and household appliances installed.

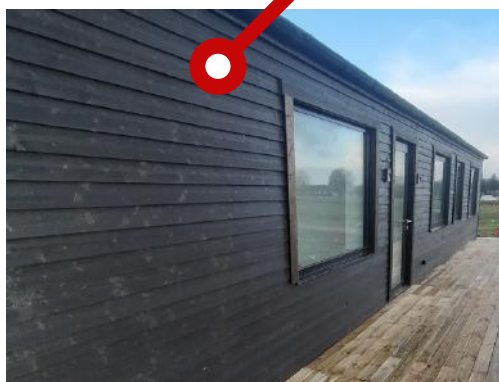
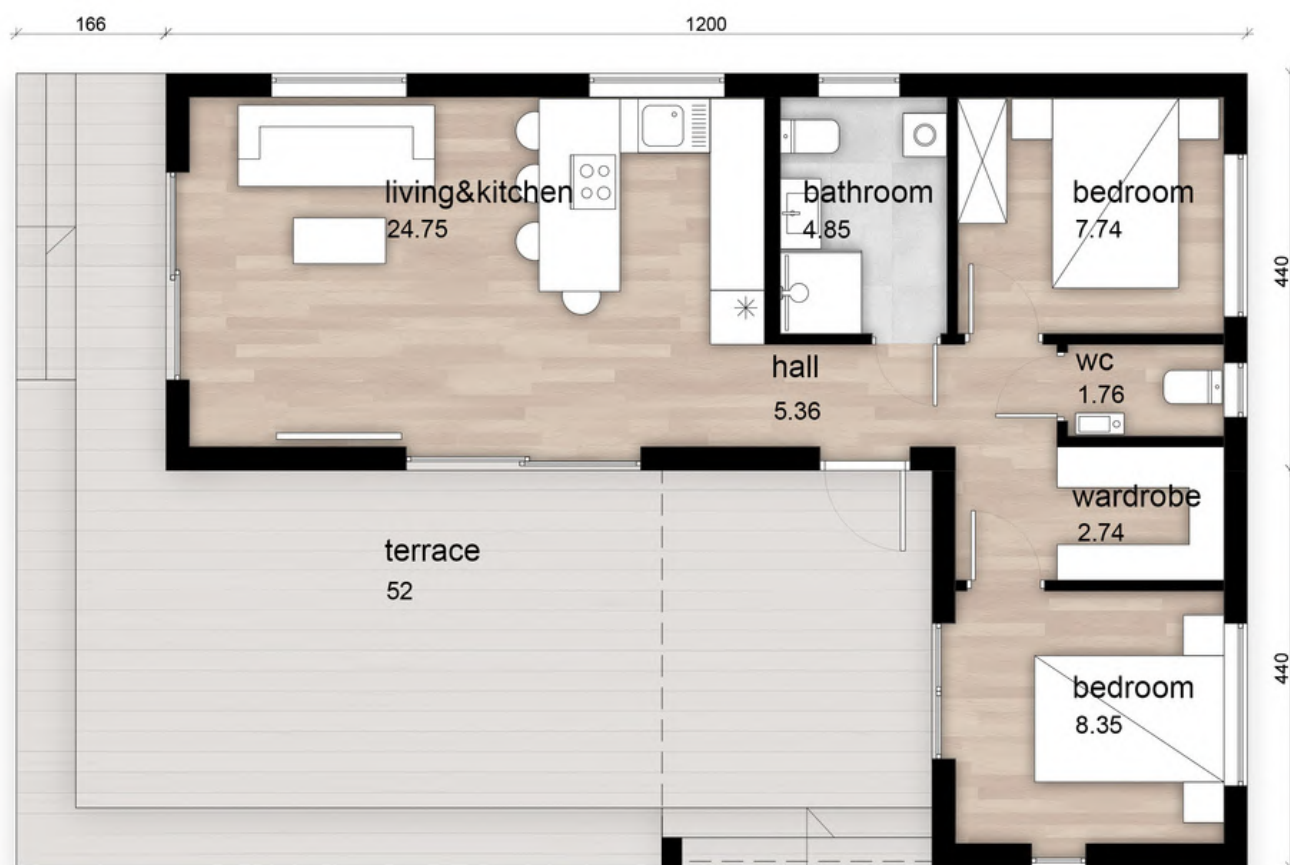
Just like in mobile homes, time is also an advantage in the case of modular homes. Only a few months pass from ordering to moving home!

The entire house is constructed in the production hall, and its assembly on the plot and connection to the media takes only a few days.



MODULAR HOME WLAD

12 m x 4.4 m + 3.5 m x 4.4 m



BASIC DIMENSIONS AND SPECIFICATION:

- Wall thickness: 320 mm
- Floor thickness: 270 mm
- Ceiling thickness: 360 mm
- Seam metal roof
- Elevation: spruce board and seam sheet metal
- PVC windows, triple-glazed
- Air conditioning - heating
- Electric underfloor heating on WiFi
- Internal walls finished with OSB boards and plasterboard
- Full water and electrical installation

MODULAR HOME WLAD

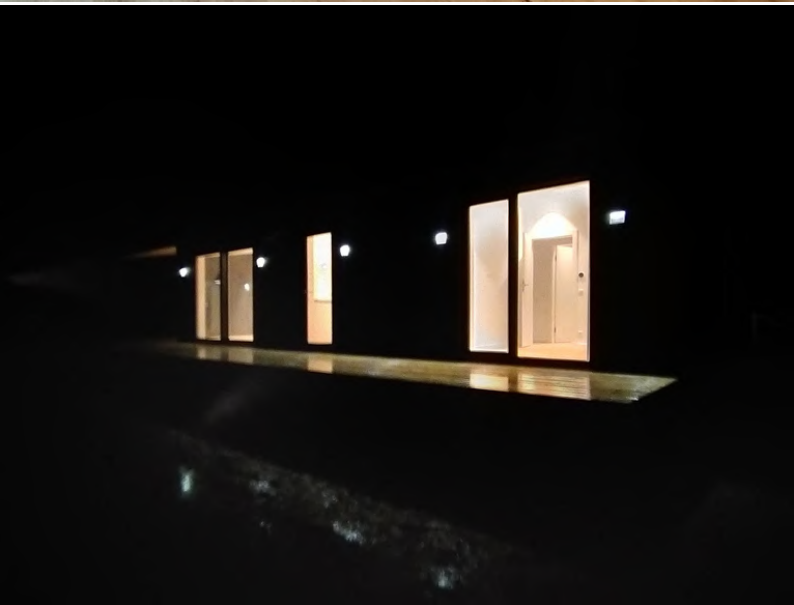
12 m x 4.4 m + 3.5 m x 4.4 m

The valuation is prepared after individual consultation

Breakdown of Payments:

- 50% kwoty po podpisaniu umowy, przed rozpoczęciem pracy
- 25% do 60 dni kalendarzowych od akceptacji projektu domu
- 25% po zakończeniu prac i odbiorze robót na terenie Wykonawcy

Delivery time: 180 days, calculated from the advance payment











JACEK PIASECKI, CEO

+48 788 080 050

JACEK@JPJMOBILEHOUSE.COM

WWW.JPJMOBILEHOUSE.COM

